

QuietRock® System

Installation Instructions

(For QuietRock® ES & ES Mold Resistant)

IMPORTANT:

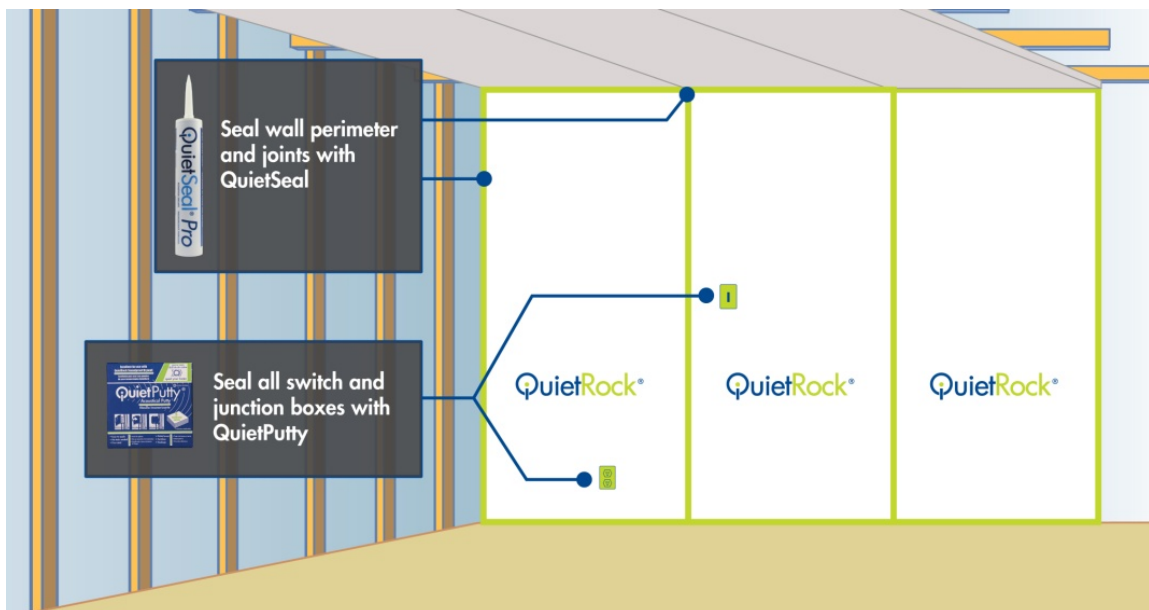
- Do not remove the edge tape on the QuietRock® EZ-SNAP products
- Hang QuietRock® immediately or store flat in a dry location
- Do not store QuietRock® in direct sunlight.
- Avoid exposure to moisture during storage, construction, and installation. See GA 216 - 2013 - Item 3 as a reference.
- Do not cover with plastic for extended periods. See GA 216 - 2013, Item 3.2.1
- Using the complete QuietRock® System (QuietRock®, QuietSeal® Pro, and QuietPutty®) is important in order to maximize and maintain the acoustic performance of assemblies:

- Acoustic sealants/ caulking such as QuietSeal® Pro, shall be used around the perimeter and unbacked seams.
- Acoustical putty, such as QuietPutty®, shall be used with electrical outlets, HVAC ducts, water hookups, cables or other penetrations.

QuietSeal® Pro and QuietPutty® are designed to prevent sound leaks. The omission of these products may compromise the acoustical rating of the assembly.

Completely read the instructions below before beginning installation and be sure to always follow all OSHA safety guidelines when installing any PABCO® Gypsum product.

THE QUIET SYSTEM



QUIETPUTTY®: WRAP ELECTRICAL OUTLETS AND SEAL PENETRATIONS TO PREVENT NOISE LEAKS

QuietPutty® has been specifically formulated to maintain the performance of acoustically rated walls with penetrations. It is designed to acoustically seal electrical, phone and other penetrations. No tools are required. To ensure adequate adhesion, all surfaces shall be clean and free of dust, grease, oil, loose materials, rust or other substances.



1. Inspect the outlet box to make sure it is properly installed and free of dust, grease, oil, loose materials, rust or other substances. Remove the release paper from both sides of the QuietPutty® pad.



2. Starting at side, align the QuietPutty® pad to front edge of box and overlap onto the stud. Cut the QuietPutty® pad to allow the pad to fit around conduits or cables.



3. Pleat the extra material at the corners. Fold the pleated corners into place and firmly press the QuietPutty® pad into place so that the entire surface of the back of the outlet box is covered and sealed against drywall stud.

QUIETROCK® EZ-SNAP: APPLY TO ASSEMBLY TO REDUCE NOISE BETWEEN PARTITIONS

QuietRock® panels are designed to take the place of multiple layers of drywall as well as other outdated noise reduction methods. QuietRock® ES (easy score and snap) can be used with a variety of standard framing techniques, stud types, and configurations (single, staggered or double stud construction).

Install per ASTM standard or gypsum association guidelines

- Standard Specification for Application and Finishing of Gypsum Board ASTM C 840-04
- Recommended Levels of Gypsum Board Finish: GA-214
- Application and Finishing Gypsum Panel Product: GA-216

Score and Snap:

- 1) QuietRock® EZ-SNAP panels can be snapped, drilled, cut and attached framing - similar to regular 5/8" gypsum panels. Score and snap QuietRock® ES panels with any utility blade.



Score



Snap



Hang

Hang as usual:

- 1) Secure QuietRock® EZ-SNAP panel to the studs using appropriate Bugle Head drywall screws every 12" or as required by code. Use coarse thread for wood studs and fine thread for metal studs. Nails may be used on wood studs. QuietRock® EZ-SNAP may also be placed over existing drywall in retrofit applications. Do not use structural glue when hanging QuietRock® EZ-SNAP.
- 2) Finish securing the QuietRock® EZ-SNAP panel to the studs with drywall screws per GA-216 4.8.3.2. Screws shall be driven so that screw heads are slightly below the gypsum panel product surface without braking the face paper, fracturing the core, or stripping the framing member.

QUIETSEAL® PRO: PROPERLY SEAL AROUND PERIMETER OF WALL, FLOOR, CEILING, PENETRATIONS AND ANY SEAM UNBACKED BY A STUD TO MAINTAIN HIGH ACOUSTIC PERFORMANCE

- 1) Clean all surfaces before installation so they are free of dirt, grease, wax, dust, corrosion, moisture or any material that may interfere with obtaining optimum adhesion
- 2) For new construction before the top and bottom stud plates and end studs are installed, run two 1/8"-3/8" beads of QuietSeal® Pro between them and the wall, floor and ceiling.
- 3) Apply a 1/4" bead of QuietSeal® Pro around the perimeter of the wall or floor/ceiling assembly. Ensure that the QuietSeal® Pro is airtight between the QuietRock® panels and the adjacent wall floor or ceiling.
- 4) For the best acoustic isolation, apply QuietSeal® around the perimeter of each panel before putting up the next sheet.
- 5) Seal around all electrical and plumbing outlets with QuietSeal® Pro.



Tips

For gaps larger than 3/8", fill the gap with a pre-molded loose-cell filler or backer rod prior to applying QuietSeal® Pro.

When using on the edges of the panels, the adjacent sheet of QuietRock® EZ-SNAP should "squeeze" the QuietSeal® Pro in between them.

Be sure to remove excess QuietSeal® Pro with a rag or putty knife as needed. Wipe off any excess QuietSeal® Pro.

DO NOT LEAVE QUIETSEAL® PRO ON THE SURFACE, AS IT CAN INTERFERE WITH TAPE, MUD, PAINT AND OTHER FINISHING STEPS.

SURFACE FINISH PER ASTM STANDARD

- Standard Practice for Use of Sealants in Acoustical Applications: ASTM C919-08

Using QuietRock® EZ-SNAP in Ceiling Construction

To use QuietRock® EZ-SNAP panels on a ceiling application, simply follow the above instructions for walls. CONSULT LOCAL BUILDING CODES FOR SCREW PLACEMENT. It is advised that you use a drywall lift to install any drywall on ceilings properly.

Fire Resistance Information

- Check www.QuietRock.com website or [UL website](#) for fire rating information.
- Check with code authority to verify that QuietRock® EZ-SNAP panels can be added to your specific assembly

GENERAL NOTES

Sound Assemblies:

QuietRock® to be installed using Industry Sound Assembly Guidelines as follows:

- Demising walls/Sound Compartments must run deck to deck to avoid flanking
- Avoid penetration/outlet back to back stud placement- alternate stud cavities
- Panels should be isolated from floor to ceiling and adjacent walls, then sealed with sound sealant such as QuietSeal® Pro per ASTM E-90 standard
- Use backer-rod in areas greater than 3/8" before applying QuietSeal® Pro

Follow all OSHA guidelines when completing any construction project. Use normal care and precaution when working with PABCO® Gypsum's products.

QuietPutty®:

- Cleanup with soap and water.
- Dispose of excess QuietPutty® in the same responsible manner as you would any building material.

QuietRock®:

- Lift the panels using OSHA guidelines, e.g. do not bend over and lift using back muscles; instead use the leg muscles.
- When cutting or scoring large amounts of drywall, follow OSHA regulations concerning exposure to gypsum dust, including wearing appropriate protective masks if ventilation required.
- Dispose of excess QuietRock® in the same responsible manner as you would any building material.
- Ensure there is adequate ventilation and temperatures are maintained within the range of 50° - 95°F (10° - 35°C) during the finishing process. See ASTM C 840 Section 4 "Environmental Conditions" for additional details.

QuietSeal® Pro:

- QuietSeal® Pro can be easily removed with soap and water. Wear disposable gloves, for easier clean-up.
- Dispose of in accordance with applicable federal, state, and local regulations.

For further information see the Material Safety Datasheet (MSDS) on line at www.QuietRock.com.



Type X, 5/8" sound damping gypsum panel without paper or metal in the core. Cuts and installs similar to regular gypsum panel products. QuietRock® ES is the professional's choice for acoustic walls in residential and commercial applications.

Product Specifications:

- Thickness:** 5/8" (15.9mm), tapered edges
- Width:** 4' (1220mm)
- Lengths:** 8' (2438mm), 9' (2743mm), 10' (3048mm)
- Weight:** 2.6 lbs/sqft
- STC-rated Assemblies (per ASTM E90):** 48-60
- Fire-rated (per ASTM E119, UL263):** 1 hour, Type X
- Flame Spread (per ASTM E84):** Class A
- Product Standards:** ASTM C1396
- Installation Standards:** ASTM C840; GA-214, GA-216

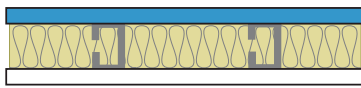
UL Assembly:  

Approved for use in many one and two hour fire-rated assemblies including U305, U309, U340, U341, U376, U386, U425, U465, V419, V463, V464, W313, W317, W459, and W460. Go to www.QuietRock.com for additional information on fire-rated assemblies. QuietRock® ES can be incorporated in several one and two-hour fire-rated UL designs. However, it is not intended as a direct substitute for a UL Classified Gypsum Board in all fire assemblies. Refer to the specific UL designs for assembly details.

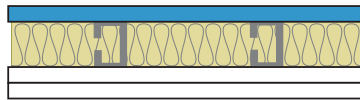
Common Wall Assemblies:

Light Gauge Steel Stud Walls

Single 3 5/8" Steel Stud Wall, 24" OC - **STC 55** Single 3 5/8" Steel Stud Wall, 24" OC - **STC 60**



QuietRock® on one side,
Type X on the other

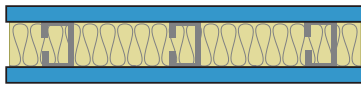


QuietRock® on one side,
2 layers 5/8" Type X on the other

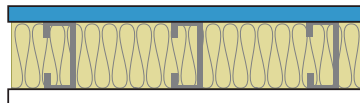
Visit www.QuietRock.com for additional assembly and technical information

Heavy Gauge Steel Stud Walls

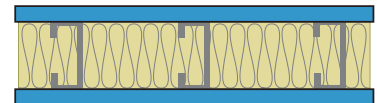
3-5/8" Single Steel Stud Wall, 16" OC - **STC 48** 6" Single Steel Stud Wall, 16" OC - **STC 49** 6" Single Steel Stud Wall, 16" OC - **STC 53**



QuietRock® on both sides



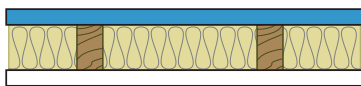
QuietRock® on one side,
Type X on the other



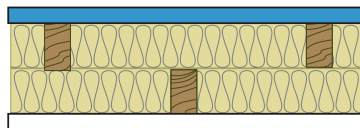
QuietRock® on both sides

Wood Stud Walls

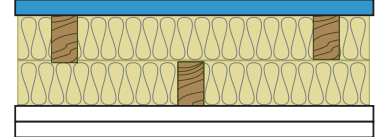
Single 2x4 wood studs, 24" OC - **STC 51** Staggered 2x4 wood studs, 8" OC - **STC 55** Staggered 2x4 wood studs, 8" OC - **STC 60**



QuietRock® on one side,
Type X on the other



QuietRock® on one side
Type X on the other



QuietRock® on one side
2 layers 5/8" Type X on the other

The information contained in this document is for general purposes only. Features and specifications are subject to change. The diagrams and stated STC ratings are intended to serve as a guide. Construction practices have an influence on final STC ratings. PABCO® Gypsum cannot guarantee actual STC ratings. Flanking sound patterns, the integrity of the wall, and construction methods factor in effective sound control. Exposure to excessive or continuous moisture and extreme temperatures of 125°F (52°C) or more should be avoided. QuietRock® should be stored flat in a dry area, under cover, on supported risers to prevent damage to product. Proper care should be taken while transporting, storing, applying and maintaining QuietRock.



Mold resistant, Type X, 5/8" sound damping gypsum panel without paper or metal in the core. Cuts and installs similar to standard gypsum panel products. QuietRock® ES Mold Resistant is recommended for mold sensitive applications such as schools, hospitals, and government projects.

Product Specifications:

- Thickness:** 5/8" (15.9mm), tapered edges
- Width:** 4' (1220mm)
- Lengths:** 8' (2438mm), 9' (2743mm), 10' (3048mm)
- Weight:** 2.6 lbs/sqft
- ASTM Standards:** C473, E84, E90, E119, D3273
- STC-rated Assemblies (per ASTM E90):** 48-60
- Fire-rated (per ASTM E119, UL263):** 1 hour, Type X
- Flame Spread:** Class A
- Mold Resistance Dating (per ASTM D 3273):** 10
- Installation Standards:** ASTM C840; GA-214, GA-216

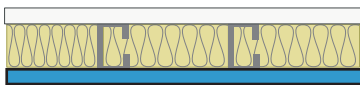
UL Assembly:  

Approved for use in many one and two hour fire-rated assemblies including U305, U309, U340, U341, U376, U386, U425, U465, V419, V463, V464, W313, W317, W459, and W460. Go to www.QuietRock.com for additional information on fire-rated assemblies. QuietRock® ES Mold Resistant can be incorporated in several one and two-hour fire-rated UL designs. However it is not intended as a direct substitute for a UL Classified Gypsum Board in all fire assemblies. Refer to the specific UL designs for assembly details.

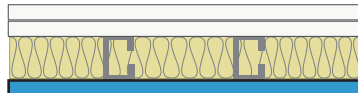
Common Wall Assemblies:

Light Gauge Steel Stud Walls

Single 3 5/8" Steel Stud Wall, 24" OC - **STC 55** Single 3 5/8" Steel Stud Wall, 24" OC - **STC 60**



QuietRock® on one side,
Type X on the other

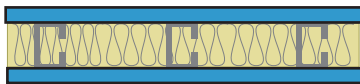


QuietRock® on one side,
2 layers 5/8" Type X on the other

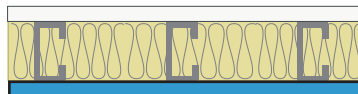
Visit www.QuietRock.com for additional assembly and technical information

Heavy Gauge Steel Stud Walls

3-5/8" Single Steel Stud Wall, 16" OC - **STC 48** 6" Single Steel Stud Wall, 16" OC - **STC 49** 6" Single Steel Stud Wall, 16" OC - **STC 53**



QuietRock® on both sides



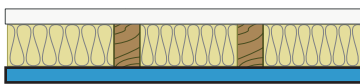
QuietRock® on one side,
Type X on the other



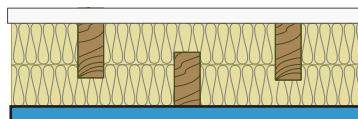
QuietRock® on both sides

Wood Stud Walls

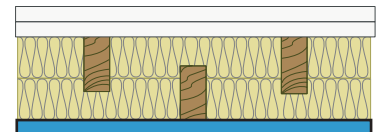
Single 2x4 wood studs, 24" OC - **STC 51** Staggered 2x4 wood studs, 8" OC - **STC 55** Staggered 2x4 wood studs, 8" OC - **STC 60**



QuietRock® on one side,
Type X on the other



QuietRock® on one side
5/8" Type X on the other



QuietRock® on one side
2 layers 5/8" Type X on the other

The information contained in this document is for general purposes only. Features and specifications are subject to change. The diagrams and stated STC ratings are intended to serve as a guide. Construction practices have an influence on final STC ratings. PABCO® Gypsum cannot guarantee actual STC ratings. Flanking sound patterns, the integrity of the wall, and construction methods factor in effective sound control. Exposure to excessive or continuous moisture and extreme temperatures of 125°F (52°C) or more should be avoided. QuietRock® should be stored flat in a dry area, under cover, on supported risers to prevent damage to product. Proper care should be taken while transporting, storing, applying and maintaining QuietRock.